

FOR LEASE

NEWNAN PROFESSIONAL CENTER (NPC) BUILDING C

2201 Newnan Crossing Blvd, Newnan, GA 30265



Property Details:

- 40K SF Medical Office Building
- Lead Tenant is OrthoAtlanta
- 20,000 SF Available on the Second Floor
- Generous Tenant Improvement Allowances
- Across the street from Piedmont Newnan Hospital
- Estimated Delivery 4th Quarter 2019
- Lease Rate: \$22/SF NNN

Some of the NPC tenants include: Building A - Piedmont Internal Medicine, Wound Care and Hyperbaric Center, Pain Care and Building B - Resurgens Orthopaedics, DaVita Dialysis



1100 Commerce Drive, Suite B
Peachtree City, GA 30269
Office: 770-486-8200
QuantumCRE.com

Paul Schwinne, CCIM

Broker

Cell: 678-296-1588

PSchwinne@QuantumCRE.com

David A. Strickland

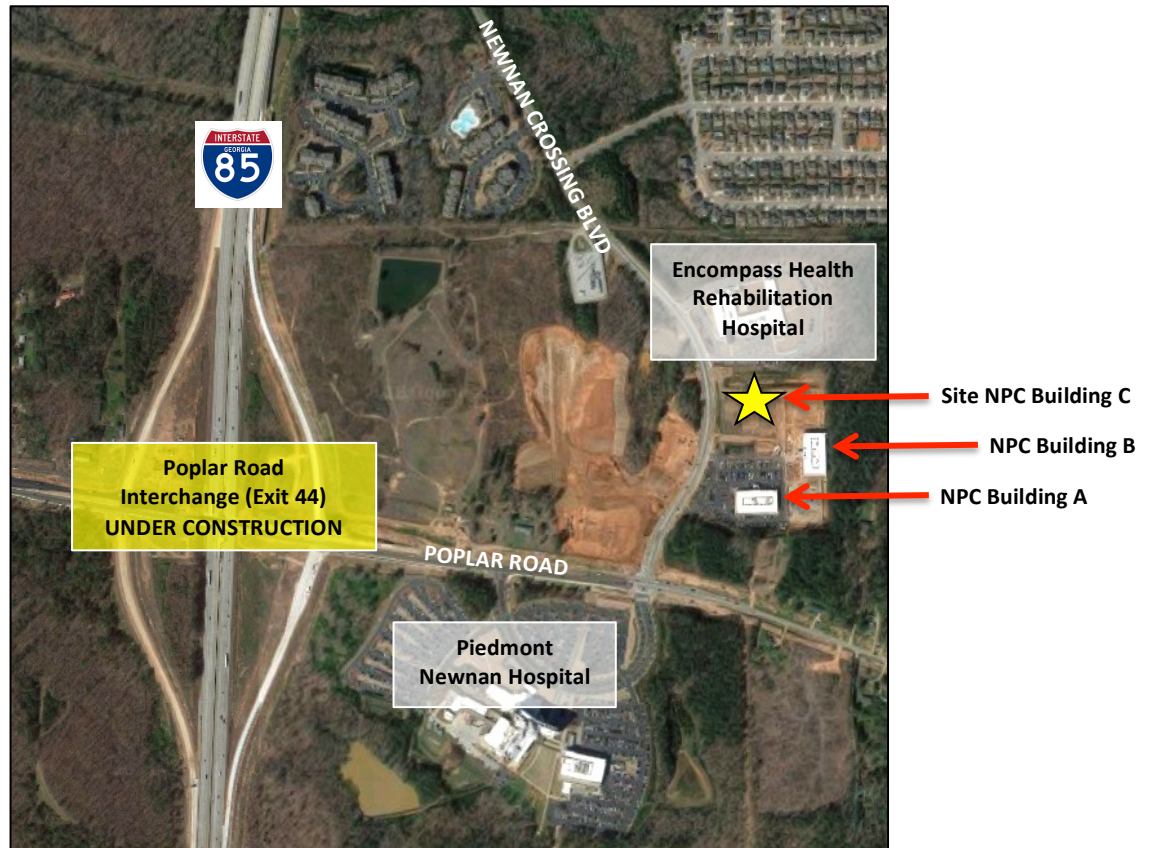
Associate Broker

Cell: 770-377-3078

DStrickland@QuantumCRE.com

This information has been secured from sources we deem reliable, but we make no representations or warranties, expressed or implied as to the accuracy of the information.

2201 Newnan Crossing Blvd, Newnan, GA 30265



Area Information

- Site is across the street from the Piedmont Newnan Hospital (PNH) campus on Poplar Road in Coweta County. PNH is a 136-bed hospital on 105 acres.
- Encompass Health Rehabilitation Hospital of Newnan opened in Late 2014. This 50-bed inpatient rehabilitation hospital is adjacent to the site.
- Cancer Treatment Centers of America (CTCA) has a 50-bed hospital on approximately 100 acres located 2 miles from the site.
- Construction of the I-85/Poplar Road Interchange began in the Spring of 2016. Completion scheduled for 2019.



Office: 770-486-8200

This information has been secured from sources we deem reliable, but we make no representations or warranties, expressed or implied as to the accuracy of the information.